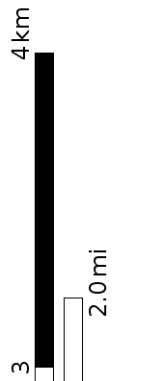
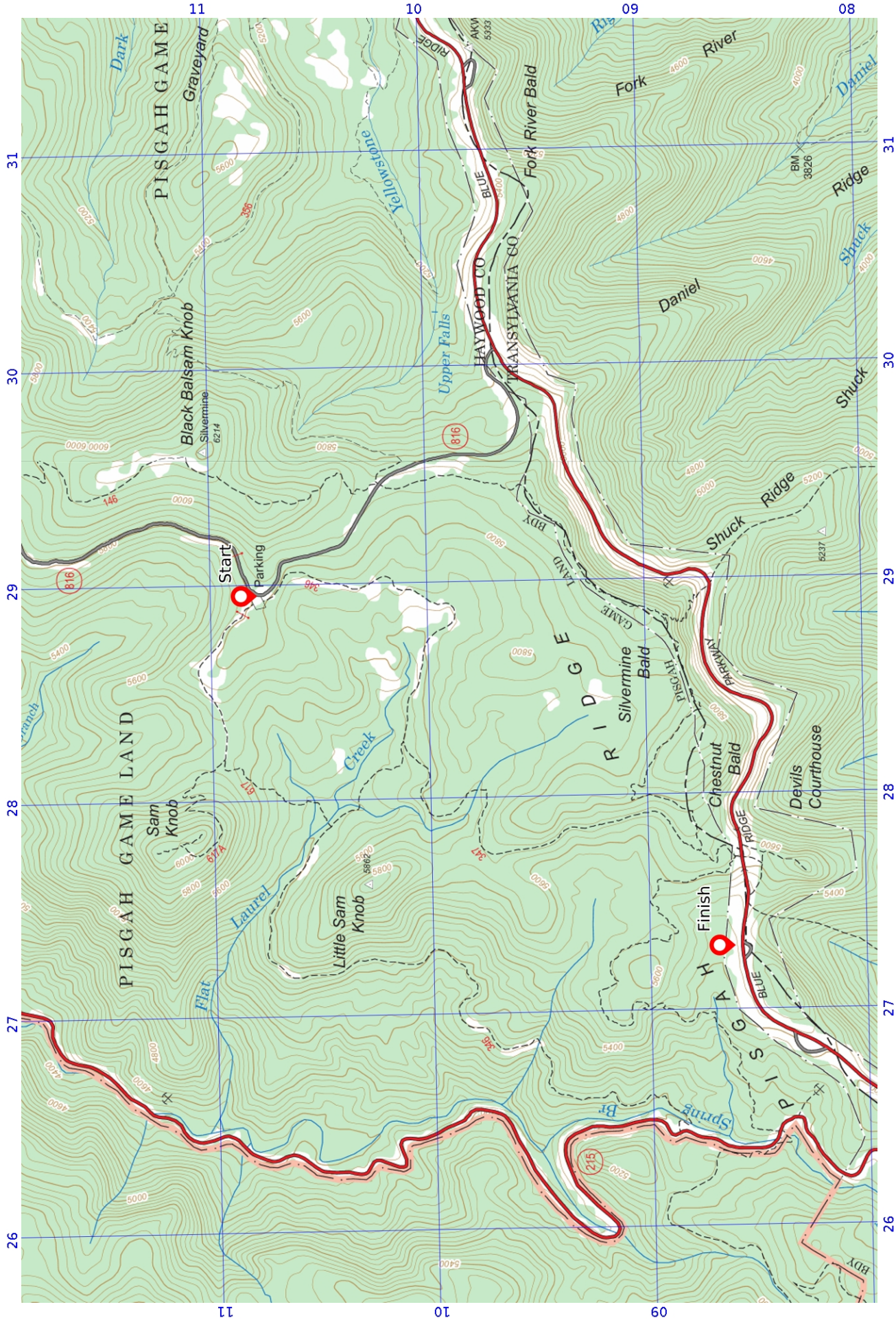




Land Nav Practice Test



- 1) What are the USNG coordinates of the START POINT? _____
- 2) What are the USNG coordinates of the FINISH POINT? _____
- 3) What is the declination of this map (degree / west or east)? _____
- 4) What is the magnetic azimuth you would walk to go from the START POINT to the FINISH POINT? _____
- 5) What is the back azimuth? _____
- 6) What is the distance in meters between start and finish? _____
- 7) If you travel a 317-degree grid azimuth for 650 meters from the finish point, what will your USNG grid coordinates be? Easting: _____ Northing: _____
- 8) From this new point what would your magnetic (not grid) azimuth be to return to the starting point? _____
- 9) Name three checkpoints along your route and the distance from the start point for each:
 - 1) _____
 - 2) _____
 - 3) _____
- 10) What feature is located at 2760 / 1028? _____



Scale 1:24000 1 inch = 2000 feet

FUNARS Practice Map
 WGS84
 USNG Zone 17SLV
 SARTopo